



OAKLEY

TUMP 2

MANUAL



TM

TABLE OF CONTENTS

Getting Started	2
Setting Up OAKLEY THUMP to Play Music	3-5
Supported Music File Formats	6
Store Any Kind of File	7
Charging the Battery	8
Accessories	9
Troubleshooting	10-11
Safety and Handling	12-14
Cleaning	15
Specifications	16-18
Service and Support	19-22
Communication Regulation Information	23-25

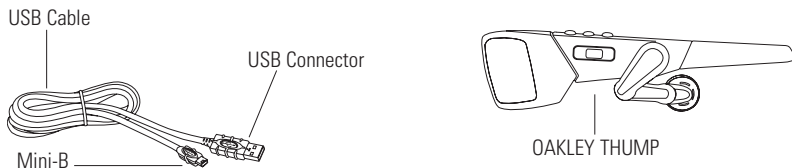
GETTING STARTED

OAKLEY THUMP allows you to transfer AAC, MP3, WMA and WAV files from your computer and listen to music anywhere. You can also use OAKLEY THUMP to backup important files and transport any kind of file from one computer to another.

OAKLEY THUMP combines a digital music player with Oakley's world-class sunglass technology. Patented XYZ Optics® maintains critical clarity at all angles of vision, even at the periphery of raked-back lens contours that maximize protection against sun, wind and side impact. Lightweight O Matter® frame material offers all-day comfort. The lenses are made of pure Plutonite®, a material that filters out 100% of all UVA, UVB, UVC and harmful blue light.

WHAT YOU NEED TO GET STARTED

Your OAKLEY THUMP comes with the following components:



To use OAKLEY THUMP with a Microsoft® Windows® PC, you must have:

- Windows XP, Windows 2000 or Windows ME. Windows 98SE users must download the USB Mass Storage Device Driver from www.oakley.com/thump or call Oakley in the U.S. at 1 (800) 969-2895 and arrange to have a CD sent. Customers outside of the U.S. should contact their local corporate office. See the end of this manual for international contact information. (Note that OAKLEY THUMP cannot be used with Windows NT.)
- A USB 2.0 or USB 1.1 connection port

To use OAKLEY THUMP with a Macintosh®, you must have:

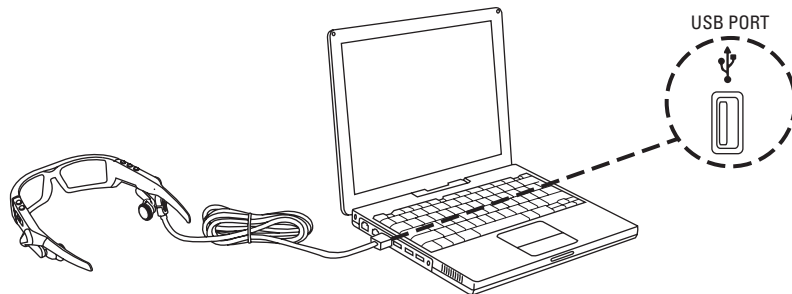
- Mac OS 10.1.5, Mac OS 10.2 or Mac OS 10.3
- A USB connection port

SETTING UP OAKLEY THUMP TO PLAY MUSIC

To set up OAKLEY THUMP, first charge the battery. The battery will reach 80% charge after one hour, but a full three-hour charge is recommended. Then with OAKLEY THUMP connected to your computer, drag-and-drop files from your computer hard drive to the OAKLEY THUMP drive icon or folder. OAKLEY THUMP will play song files in AAC, MP3, WMA or WAV file format.

STEP 1: CHARGE THE BATTERY.

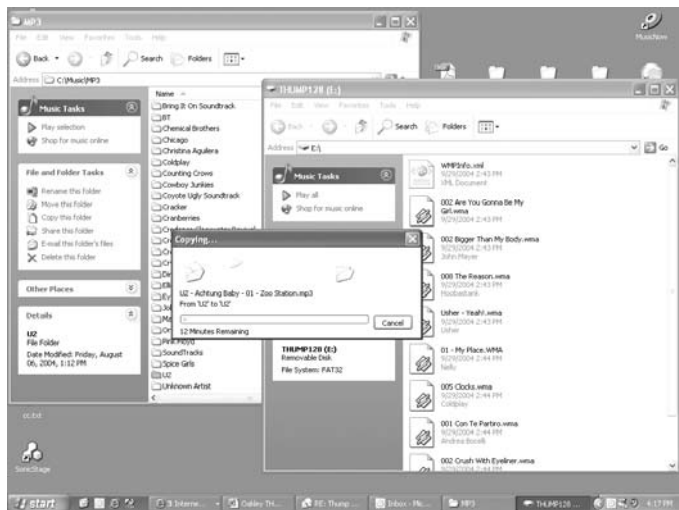
With the USB cable, connect OAKLEY THUMP directly to your computer's USB port. OAKLEY THUMP will draw a small amount of electricity from your computer to charge its internal battery. (The USB cable can also connect OAKLEY THUMP to an optional Wall Charger, or you can use your OAKLEY THUMP Car Charger, both sold separately. See the accessory card for more information.) The USB cable plugs into the bottom of OAKLEY THUMP, behind the ear boom on the right side. Be sure the earphone boom is pushed back to expose the Mini-B USB receptacle in the eyewear frame. Release the protective cover from the connection port. When plugging in the USB cable, be sure to align the plug correctly. If the plug will not go in, try flipping it over. Use only the USB cable included with OAKLEY THUMP and be sure you have the right connection port on your computer.



STEP 2: TRANSFER THE MUSIC FILES.

If your OAKLEY THUMP is not already attached to your computer, attach it now with the USB cable. In Windows Explorer, OAKLEY THUMP will show up as a removable disk drive. Double-click the disk drive called "THUMP". This will show songs that come preloaded in the OAKLEY THUMP memory.

Open a second folder window that shows the AAC, MP3, WMA or WAV music files currently stored on your computer. (See "Transferring Music from CDs" for information on how to convert CD music to these compressed file formats.) Now drag-and-drop the files from your hard drive folder to the OAKLEY THUMP folder window. The songs will play back in the order in which you drag-and-drop them. You can also play them at random. See the Quick Reference guide for more information.



STEP 3: DISCONNECT WITH "EJECT".

Because your computer recognizes OAKLEY THUMP as a removable disk drive, you must "eject" OAKLEY THUMP from the computer using a software command. Unplugging the USB cable without ejecting OAKLEY THUMP may result in data loss.

- **For Windows:** In the Windows Task Bar (the row of small icons which is usually located at the bottom right of the screen), click the "Safely Remove Hardware" icon (with a USB symbol) with your left mouse button. A small window pops up. Click on the words "Safely Remove USB Mass Storage Device."
- **For Macintosh:** Go to the Finder and click on "File" then Eject "OAKLEY THUMP."
Alternative method: Click on the "OAKLEY THUMP" icon on the Mac Desktop and drag it to the "Eject" icon on the Dock.

STEP 4: PLAY MUSIC.

After OAKLEY THUMP has been properly "ejected" from your computer, disconnect the USB cable. Adjust the earphone extenders to fit your ears. Note that the earphones pivot in and out, and each earphone is mounted on a telescoping boom for moving forward and back. Press and hold the **Play/Pause** button until the power-up tone is heard. THUMP will begin playing the first song. See the Quick Reference guide for information on controls.

SUPPORTED MUSIC FILE FORMATS

OAKLEY THUMP supports multiple file formats. AAC, MP3 and WMA are more compressed than WAV file formats, so using them will allow you to fit more songs in the internal memory.

- AAC (.M4A)
- MP3 (up to 320 kbps)
- MP3 Variable Bit Rate (VBR)
- WMA
- WMA DRM
- WAV

TRANSFERRING MUSIC FROM CDS

To transfer songs from a music CD to OAKLEY THUMP, you must first convert the CD music into one of the supported file formats. If you have a CD burner, the software included with the burner may have this ability. Otherwise, there are many music-playing programs that also convert files. Check the Internet for these free third-party programs. One or more might already be installed on your computer. Look in your computer menu for a media program that plays CDs, then select Help from the menu and look for “file conversion,” “AAC,” “MP3,” “WMA” or “rip.” Once the files are converted, use the directions above to transfer them to OAKLEY THUMP.

WARNING: This product is for your personal use only. Unauthorized recording or duplication of copyrighted material may infringe upon the rights of third parties and may be contrary to copyright laws.

STORE ANY KIND OF FILE

OAKLEY THUMP can store music files and data files at the same time. You can use OAKLEY THUMP to backup important files, and transport files to any computer that has a USB connection port.

TO STORE DATA FILES ON OAKLEY THUMP

Follow the directions for transferring music files, and simply drag-and-drop files of any format. OAKLEY THUMP 256MB, 512MB or 1GB will store the files in its memory. To retrieve the files from OAKLEY THUMP, follow the directions for connecting OAKLEY THUMP to a computer. Drag-and-drop the stored files out of the OAKLEY THUMP folder window, moving them to your computer desktop screen or another folder window. Be sure to use the “eject” procedure when disconnecting OAKLEY THUMP from your computer.

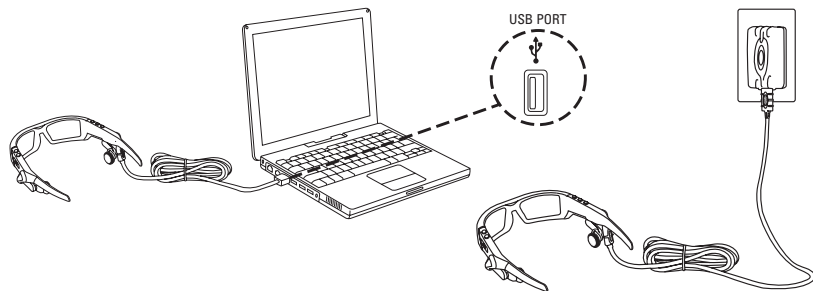
CHARGING THE BATTERY

Battery life depends on many things, including volume level, external temperature and music file format. Under ideal conditions, the internal lithium battery will provide approximately six hours of continuous playing time. If OAKLEY THUMP hasn't been used for a while, the battery may need to be recharged. The small indicator light (on the inner side of the right earstem) will blink red when the remaining battery power is less than 10%. When the battery is low, you will hear warning tones between songs and during songs with more than 10 minutes remaining.

Charge the internal battery by connecting OAKLEY THUMP to your computer or an optional Wall Charger or Car Charger.

- For charging with your computer, the computer must be turned on and cannot be in Sleep or Suspend mode.
- For charging with an optional Wall Charger, make sure the charger is plugged into a working electrical outlet.

OAKLEY THUMP will be 80% charged after one hour, but a full three-hour charge is recommended. When OAKLEY THUMP is fully charged, the small indicator light will turn solid green.



ACCESSORIES

Go to www.oakley.com/thump to purchase accessories for OAKLEY THUMP. Available accessories include:

- Oakley Car Charger
- Oakley World Wall Charger
- Oakley USB Cable
- OAKLEY THUMP Soft Vault
- OAKLEY THUMP Soft Box

New accessories may be available in the future. Visit www.oakley.com/thump for an updated list of all available accessories.

WARNING: Use only accessories made by Oakley. Using third-party charger accessories could lead to electric shock and injury, and will void the warranty.

TROUBLESHOOTING

RESETTING OAKLEY THUMP

Most problems can be solved by resetting OAKLEY THUMP:

- To reset OAKLEY THUMP, hold down the *Play/Pause* button and the *Previous Song/Rewind* button at the same time. Resetting OAKLEY THUMP will not erase the songs or files stored in memory.
- If the reset procedure does not work, you may need to restore the internal software. See “Software Restore and Update” below.

IF OAKLEY THUMP WON'T TURN ON

- Be sure to press and hold the *Play/Pause* button until the power-up tone is heard.
- Hold down the *Play/Pause* button and the *Previous Song/Rewind* button at the same time.
- It may need a recharge. Connect OAKLEY THUMP to your computer or an optional charger. (If using an optional Wall Charger, be sure the charger is plugged into a working electrical outlet.) A full three-hour charge is recommended.
- If the reset procedure does not work, you may need to restore the internal software. See “Software Restore and Update” below.

IF OAKLEY THUMP WON'T PLAY MUSIC

- Make sure the volume is not set too low for you to hear the music.
- Make sure the battery is charged. Connect OAKLEY THUMP to your computer or an optional charger. When OAKLEY THUMP is fully charged, the small indicator light will turn solid green.
- Make sure OAKLEY THUMP has music files in its memory. Connect OAKLEY THUMP to your computer and open the folder that shows the contents of the OAKLEY THUMP memory. Your computer will refer to this folder as a removable drive. (See “Setting Up OAKLEY THUMP to Play Music” for more information.)

- Make sure you have the correct music file formats loaded into the OAKLEY THUMP memory. OAKLEY THUMP plays AAC, MP3, WMA and WAV file formats.

IF SONGS PLAY AT DIFFERENT VOLUME LEVELS

- Prerecorded music (WAV files or compressed files that were originally recorded in analog) may sound louder or quieter than other songs on OAKLEY THUMP. When recording WAV files or converting analog files to digital format, be careful to adjust the volume level to match the other songs in your music collection.

SOFTWARE RESTORE AND UPDATE

Oakley periodically updates OAKLEY THUMP software to add features and improve performance. You can choose to either restore or update your OAKLEY THUMP software.

- If you choose restore, all songs and data files stored on OAKLEY THUMP will be erased when the internal software is restored.
- If you choose update, the software will be updated but songs and data files stored on OAKLEY THUMP will not be affected.

Visit www.oakley.com/thump/support to ensure you have the latest software available.

SAFETY AND HANDLING

WARNING: USE AT YOUR OWN RISK

WARNING: Using headphones while operating a motor vehicle, motorcycle, watercraft or bicycle may be dangerous, and is illegal in some states. Check your local laws. Use caution while using your OAKLEY THUMP when you are engaging in ANY activity that requires your full attention. While engaging in any such activity, removal of the speakers from your ear area or turning off your OAKLEY THUMP will keep you from being distracted, so as to avoid accident or injury.

AVOID HEARING DAMAGE

WARNING: Using the headphones at high volume may result in permanent hearing loss. If you experience ringing in your ears, reduce the volume or discontinue using OAKLEY THUMP. With continued use at high volume, your ears may become accustomed to the sound level, which may result in permanent damage to your hearing. Keep OAKLEY THUMP volume at a safe level.

DO NOT EXPOSE TO MOISTURE

WARNING: Using OAKLEY THUMP in or near water or other liquids, or in wet locations, may cause electric shock and serious injury. The frame is not waterproof, so follow these safeguards:

- Do not use OAKLEY THUMP during prolonged periods of perspiration.
- Do not use OAKLEY THUMP while swimming or bathing.
- Do not wear OAKLEY THUMP in the rain.
- If any food or liquid is spilled on OAKLEY THUMP or its optional power adapter, unplug the USB cable from OAKLEY THUMP and unplug the power adapter from the electrical outlet before drying.

DO NOT ATTEMPT TO DISMANTLE

WARNING: Do not attempt to open OAKLEY THUMP or its optional power adapter. Doing so may expose you to electric shock and serious injury. There are no user-serviceable parts inside. Any attempt to alter or repair the unit, except by an Authorized Oakley Service Facility, will void the limited warranty.

BATTERY

Do not attempt to remove the OAKLEY THUMP battery. Battery disposal must be in accordance with local environmental regulations.

PROPER USE OF EYEWEAR

WARNING: This eyewear is not designed to protect the wearer from all injury in the event of impact with hard objects or if the lens is not properly secured in the frame. Oakley does not recommend the use of tinted lenses for night driving, or direct viewing of the sun or strong artificial light sources. Sunglasses are not recommended for industrial protection.

LOCATION OF USE

OAKLEY THUMP is NOT to be used in the vicinity of any explosive or hazardous substances as it may become volatile and cause serious injury or death.

While traveling as an airline passenger, you must comply with all airline procedures and directions, and turn off OAKLEY THUMP when directed.

RECYCLING



Please contact your local corporate office or go to www.oakley.com/recycling for recycling/disposal information for this product. Do not dispose with household waste.

TEMPERATURE

- Do not store or use OAKLEY THUMP in temperatures lower than -10°C / 14°F or higher than 45°C / 113°F.
- Conditions inside a parked car can exceed this temperature range. Do not store OAKLEY THUMP in a parked car.
- Do not store OAKLEY THUMP in direct sunlight.
- Storing OAKLEY THUMP fully charged in high temperature conditions may permanently reduce the life of its lithium battery.
- Battery life may temporarily shorten in low-temperature conditions.

MAGNETISM

Do not expose OAKLEY THUMP to strong magnetic fields such as those that surround stereo speakers and TV picture tubes.

SHOCKWAVE

Do not expose OAKLEY THUMP to excessive force or impact. Be careful not to drop OAKLEY THUMP.

USB CONNECTORS AND PORTS

Do not force the USB connector into a port. Make sure the connector matches the port in shape and size. If the connector won't go into the port, try flipping the connector 180 degrees. Note that the USB cable included with OAKLEY THUMP has a Mini-B plug. Standard-size USB cable plugs will not fit the receptacle in the eyewear frame.

CLEANING

To clean the lenses, use the Microclear™ bag that was included with OAKLEY THUMP or use a soft cotton cloth. First, gently brush the cloth across all lens surfaces to remove any grit or particles that might scratch the lens. Next, gently rub the lenses between the folds of the cloth.

When cleaning OAKLEY THUMP, please note the following:

- The frame is not waterproof, and moisture may damage the electronic circuitry. Do not rinse or immerse any part of the frame. Keep the frame dry at all times.
- Before cleaning, make sure OAKLEY THUMP is unplugged from the USB cable.
- Do not clean the lenses with soaps, detergents, ammonia, alkaline cleaners, abrasive cleaning compounds or solvents. These substances may damage the lens coatings or leak into the frame and damage the electronic circuitry.
- Should a lens become scratched, have it replaced immediately to ensure your vision is not compromised.

SPECIFICATIONS

Model	OAKLEY THUMP 256 MB, 512MB / OAKLEY THUMP 1GB
Codec supported.....	AAC (up to 320kbps) /MP3 (up to 320 kbps) / WMA (up to 192 kbps) / WAV
Memory.....	256, 512MB or 1GB depending on model
File transfer speed	Up to 1.4MB/s
Signal to noise ratio	~ 90 dB
THD.....	< 0.1%
Frequency response.....	20Hz – 20,000Hz
Earphone output (L+R)	20mW (nominal) / 40mW (max)
Battery type / capacity	Built-in Lithium Ion Polymer / 3.7V, 150mAh
Maximum input power rating	5VDC, 150mA
Battery life.....	Up to 6 hours of continuous playtime*
Recharging time.....	3 hours (80% charge in 1 hour)
Firmware.....	User upgradeable via http://www.oakley.com/thump/
Interface	USB 2.0 (backward compatible with USB 1.1)

*Battery life depends on numerous factors including volume level and audio format.

YOU'RE NOW WEARING THE BEST EYE PROTECTION ON EARTH

Only Oakley utilizes pure Plutonite® lens material, a proprietary synthetic that exceeds the optical requirements of ANSI Z87.1 standards while inherently blocking 100% of all UVA, UVB, UVC and harmful blue light. Oakley performance eyewear also takes advantage of patented XYZ Optics®, a breakthrough that maintains precise clarity at all angles of vision and extends the range of optical correction to the periphery of dual-spherical eyewear lenses and single-lens sports shields.

All Oakley sunglasses satisfy ANSI Z80.3 & EN 1836 standards for optical and mechanical performance and are in accordance with the EC Directive 89/686/EEC for the I.P.D. of category I corresponding to the European Community.

Light transmission ranges from 9% to 12% of available light. All transmission profiles are based on data obtained according to ANSI Z80.3 and EN 1836 test protocols.

HOW TO KEEP THE BEST AT THEIR BEST

All Oakley lenses: To help maintain the High Definition Optics® (HDO) of Oakley lenses, your new eyewear comes with a specially-woven electrostatic Microclear™ bag for cleaning and storage. Using it will preserve the superior optical quality of Oakley's pure Plutonite lenses. Hand wash and air-dry the Microclear™ bag regularly.

LENS TINT TRANSMISSION PROFILES

VR50™ Protection Index: 1	50%	DARK BRONZE Protection Index: 3	12%
LIGHT GREY Protection Index: 2	39%	GOLD IRIIDIUM® Protection Index: 3	12%
G30™ TITANIUM IRIIDIUM® Protection Index: 2	29%	BLACK IRIIDIUM® Protection Index: 3	10%
BRONZE Protection Index: 2	22%	GOLD IRIIDIUM® POLARIZED Protection Index: 3	9%
GREY Protection Index: 2	18%	BLACK IRIIDIUM® POLARIZED Protection Index: 3	9%

The sunglass lens type is printed on the package. The corresponding protection index can be found in the Lens Tint Transmission Profiles above.

- Protection Index (in compliance with the standard EN 1836)
- Index 0: Aesthetic, very low protection
 - Index 1: For weak sun brightness
 - Index 2: For average sun brightness
 - Index 3: For strong sun brightness
 - Index 4: For exceptionally strong sun brightness, but not to be used for driving a motor vehicle

SERVICE AND SUPPORT

If OAKLEY THUMP does not function, follow the instructions under “Troubleshooting” in this manual. In addition, go to www.oakley.com/thump for the latest support information on OAKLEY THUMP. If OAKLEY THUMP still does not function, follow the procedures set forth below on how to make a warranty claim.

OAKLEY LIMITED WARRANTY

In the United States, OAKLEY THUMP is warranted against manufacturer’s defects for 90 days from the date of purchase. Outside of the U.S. please contact your local corporate office for warranty information. Coverage is valid only with proof of purchase from an Authorized Oakley Thump Dealer. Oakley will have the option, in its discretion, to repair or replace the defective product for the consumer. This warranty does not cover scratched lenses. Oakley may replace or repair the product with new or reconditioned parts or product, and the replaced parts or product become the property of Oakley.

EXCLUSIONS AND LIMITATIONS

- Please note that this warranty does not cover the following defects or damages to your Oakley Thump product:
- 1) after the warranty expires;
 - 2) if the product was not originally purchased from an authorized Oakley dealer;
 - 3) from repair services or attempts not performed by Oakley;
 - 4) from normal wear and tear;
 - 5) from fire, earthquake, flood or other natural disasters;
 - 6) from alteration or disassembly of product;
 - 7) from accidents, neglect, water or moisture damage or abuse;
 - 8) caused during shipment to Oakley.

Oakley is not liable for any damage to or loss of any data or other information stored on any media contained within the Oakley Thump product. Recovery or reinstallation of programs, data or other information is not covered under this Limited Warranty. It is your responsibility to backup all data before returning your product to Oakley, and for restoring all data upon your product's return to you.

THE WARRANTY AND THE REMEDIES SET FORTH ABOVE ARE EXCLUSIVE AND IN LIEU OF ALL OTHER WARRANTIES, REMEDIES AND CONDITIONS, WHETHER ORAL OR WRITTEN, EXPRESS OR IMPLIED. OAKLEY GRANTS NO OTHER EXPRESS OR IMPLIED WARRANTIES, INCLUDING, BUT NOT LIMITED TO, THE IMPLIED WARRANTY OF FITNESS FOR A PARTICULAR PURPOSE. THE CUSTOMER'S EXCLUSIVE REMEDY FOR A BREACH OF WARRANTY WILL BE THE REPAIR OR REPLACEMENT OF THE ITEM, AS DETERMINED BY OAKLEY IN THE EXERCISE OF ITS SOLE DISCRETION.

TO THE MAXIMUM EXTENT PERMITTED BY LAW, OAKLEY IS NOT RESPONSIBLE FOR DIRECT, SPECIAL INCIDENTAL OR CONSEQUENTIAL DAMAGES RESULTING FROM ANY BREACH OF WARRANTY OR CONDITION, OR UNDER ANY OTHER LEGAL THEORY, INCLUDING ANY COSTS OF RECOVERING OR REPRODUCING ANY DATA STORED IN OR USED WITH THE OAKLEY PRODUCT, AND ANY FAILURE TO MAINTAIN THE CONFIDENTIALITY OF DATA STORED ON THE PRODUCT.

The governing law for any warranty claim will be the laws of the State of California, without reference to conflicts of law principles. Venue for any such action shall lie exclusively within the state or federal courts located in Orange County, California. No Oakley dealer, agent or employee is authorized to make any modification, extension or addition to this warranty. Legal rights under applicable national law governing the sale of consumer goods are not affected by this warranty.

OBTAINING WARRANTY SERVICE

The defective product must be returned to Oakley by the owner with a Return Authorization (RA) number and a dated proof of purchase from an authorized Oakley Thump dealer. Call Oakley Customer Service at 800-403-7449 (U.S.) to obtain an RA number, and based on the information you provide, Customer Service will determine if an RA should be issued. Credit card information must be provided for Customer Service to issue the RA number. Oakley cannot accept any product that does not include a valid RA number on the package. RA numbers are valid for 15 days. If you ship the product to Oakley for warranty, you assume the risk of damage during shipping, so it is your responsibility to purchase any necessary insurance from your shipping carrier. You must use the original packaging (or the equivalent) and pay any applicable shipping charges.

NOTE: If product has been returned for a manufacturing defect and is diagnosed to be NTF (No Trouble Found), or if the warranty is void pursuant to the above exclusions, a \$39 diagnostic, shipping and handling fee will apply and will be charged to your credit card.

Returns for products after expiration of the warranty period may be repaired or replaced, at Oakley's discretion, for a specified fee to the customer. Contact Oakley Customer Service for further details.

Within the United States, telephone our global headquarters at 1 (800) 403-7449 for warranty assistance. Customers outside the United States should contact their local corporate office for warranty information.

INTERNATIONAL CONTACT INFORMATION

Local Corporate Offices:

OAKLEY AFRICA

+27 41 501 0200

OAKLEY BRASIL

+55 11 3038 9999

OAKLEY CANADA

800 448 9714

OAKLEY EUROPE

BENELUX, FRANCE,
ITALIA, SCANDINAVIA
00 800 62 55 39 00

ESPAÑA

900 953 398

PORTUGAL

800 833 121

SVERIGE

020 79 1037

OAKLEY GMBH

+49 89 99650 4100

OAKLEY JAPAN

0120 009 146

OAKLEY MEXICO

+52 5 247 0310

OAKLEY SOUTH PACIFIC

+61 3 5225 4100

OAKLEY UK LTD.

+44 1462 475 400

Oakley, Ellipse logo, Fingerprint Icon logo, O Matter, Plutonite, Iridium, Microclear, Oakley Thump, High Definition Optics and XYZ Optics are trademarks or registered trademarks of Oakley, Inc. in the United States and other countries. Microsoft, Windows, Windows OS, Windows Media and WMA are trademarks or registered trademarks of Microsoft Corporation, Inc. in the United States and other countries. Macintosh, Mac, Mac OS and iTunes are trademarks or registered trademarks of Apple Computer, Inc. in the United States and other countries. The USB-IF Logos are trademarks of Universal Serial Bus Implementers Forum, Inc. in the United States and other countries. All other brand and product names listed are trademarks or registered trademarks of their respective holders and are hereby recognized as such.

U.S.: 5648832 5969789 6010218 5689323 6168271B1 5054902 AU: 715443 716474 CH: 96192826.3 MX: 196002 194312 NZ: 323840 324184 U.S. and international patents pending.

U.S. - FEDERAL COMMUNICATIONS COMMISSION (FCC)

This device complies with Part 15 of the FCC Rules.

Operation is subject to the following two conditions:

1. This device may not cause harmful interference, and
2. This device must accept any interference received, including interference that may cause undesired operation.



CAUTION: Changes or modification to this product not authorized by Oakley, Inc could void your authority to operate the product.

This product was tested for EMC compliance under conditions that included the use of Oakley peripheral devices and Oakley shielded cables and connectors between system components. It is important that you use Oakley peripheral devices and shielded cables and connectors between system components to reduce the possibility of causing interference to radios, television sets, and other electronics devices. You can obtain Oakley peripheral devices and the proper shielded cables and connectors through Oakley Authorized Reseller.

NOTE: This equipment has been tested and found to comply with the limits for a Class B digital device, pursuant to Part 15 of the FCC Rules. These limits are designed to provide reasonable protection against harmful interference in a residential installation. This equipment generates, uses and can radiate radio frequency energy and, if not installed and used in accordance with the instructions, may cause harmful interference to radio communications. However, there is no guarantee that interference will not occur in a particular installation. If this equipment does cause harmful interference to radio or television reception, which can be determined by turning the equipment off and on, the user is encouraged to try to correct the interference by one or more of the following measures:

- Reorient or relocate the receiving antenna
- Increase the separation between the equipment and receiver
- Connect the equipment into an outlet on a circuit different from that to which the receiver is connected
- Consult the dealer or an experienced radio/TV technician for help

CANADA

This device complies under Industry Canada Guidelines.

Operation is subject to the following two conditions:

1. This device may not cause harmful interference, and
2. This device must accept any interference received, including interference that may cause undesired operation.

Ce matériel est conforme selon les directives des Industries Canadiennes.

Son fonctionnement est sujet aux deux conditions suivantes:

1. Le matériel ne peut être source d'interférences et
2. Doit accepter toutes les interférences reçues, y compris celles pouvant provoquer un fonctionnement indésirable.

This Class B digital apparatus meets all requirements of the Canadian Interference-Causing Equipment Regulations.

Cet appareil numérique de classe B respecte toutes les exigences du Règlement sur le matériel brouilleur du Canada.

EUROPE**JAPAN****AUSTRALIA****TAIWAN**

R31848

KOREA**MEXICO**